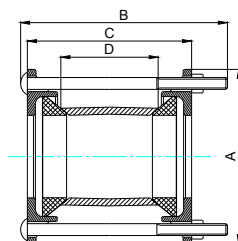


### SINGLE RANGE COUPLING FOR STEEL PIPES



DN mm	PIPE OD	A mm	B mm	C mm	D mm	HOLE	BOLT mm
15	21.7	98	150	112	83	2	M12x140
20	27.2	102	150	112	83	2	M12x140
25	32	115	150	112	83	2	M12x140
32	42.7	120	150	112	83	2	M12x140
40	48.6	125	150	112	83	2	M12x140
50	60.5	138	150	112	83	2	M12x140
65	76.3	160	160	118	102	2	M12x152
80	89.1	172	160	125	102	3	M12x152
90	101.6	184	160	125	102	4	M12x152
100	114.3	200	160	125	102	4	M12x152
125	139.8	232	173	125	102	4	M12x165
150	165.2	258	173	125	102	4	M12x152
150	168.3	260	173	125	102	4	M12x152
200	216.3	310	173	125	102	6	M12x152
200	219.1	313	173	125	102	6	M12x152
250	267.4	366	173	127	102	6	M12x152
250	273.1	373	173	127	102	6	M12x152
300	318.5	420	173	129	102	6	M12x152
300	323.9	424	173	129	102	6	M12x152
350	355.6	471	254	200	152	8	M16x240
400	406.4	521	254	200	152	8	M16x240
450	457.2	572	254	200	152	8	M16x240
500	508	628	254	210	152	10	M16x240
550	558.8	679	254	210	152	10	M16x240
600	609.6	730	254	210	152	10	M16x240
650	660.4	780	254	210	152	12	M16x240
700	711.2	831	254	210	152	12	M16x240
750	762	882	254	210	152	12	M16x240
800	812.8	932	254	210	152	12	M16x240
850	863.6	983	254	210	152	12	M16x240
900	914.4	1040	254	210	152	14	M16x240
1000	1016	1141	280	238	178	14	M16x265
1050	1066.8	1197	280	240	178	16	M16x265
1100	1117.6	1248	280	240	178	16	M16x265
1200	1219.2	1350	280	240	178	16	M16x265

NOTE: WORKING PRESSURE PN10、PN16