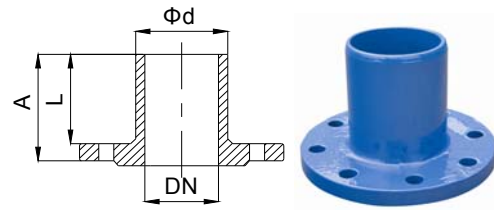
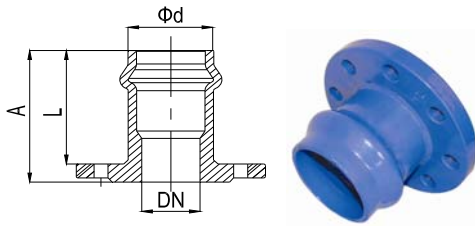


DUCTILE IRON FITTINGS FOR UPVC PIPES EN12842



**SERIES-5000
FLANGE SOCKET**

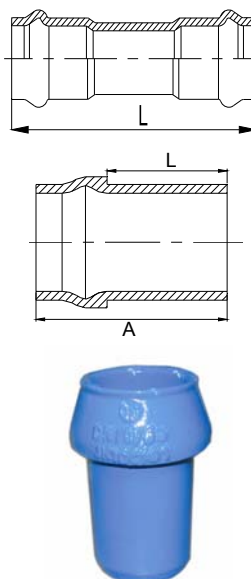
REF.	DN	Φd	A	L	P/kg
5001	40	50	100	90	2.8
5002	50	50	100	90	3.3
5002-A	50	63	100	95	3.6
5003	60	63	110	95	4.7
5003-A	60	75	100	100	4.4
5004	65	75	100	100	5.3
5005	80	75	100	100	5.0
5005-A	80	90	120	105	5.5
5006	100	110	130	115	6.2
5007	125	125	140	125	8.5
5007-A	125	140	140	130	9.0
5008	150	160	160	145	11.6
5009	200	200	180	155	16.5
5009-A	200	225	180	155	20.5
5010	250	250	190	175	24.1
5010-A	250	280	190	185	27.0
5011	300	315	220	190	30.5
5013	400	400	290	230	63.0

**SERIES-5025
FLANGE SPIGOT**

REF.	DN	Φd	A	L	P/kg
5026	40	50	120	90	2.8
5027	50	63	125	95	3.9
5028	60	75	130	95	4.5
5029	80	90	130	95	5.7
5030	100	90	130	95	5.4
5030-A	100	110	130	95	7.0
5031	125	125	170	135	8.5
5031-A	125	140	170	135	8.9
5032	150	160	170	120	11.5
5033	200	180	170	130	14.9
5033-A	200	200	170	130	16.7
5033-B	200	225	205	170	17.8
5034	250	250	200	150	28.0
5034-A	250	280	245	200	25.0
5035	300	315	200	155	34.5
5036	350	355	250	190	44.0
5037	400	400	250	190	57.5
5037-A	400	450	270	225	56.8

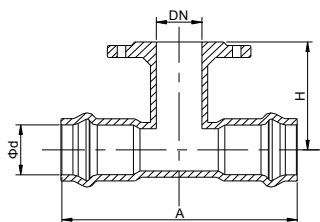
**SERIES-5500
DOUBLE SOCKET COLLAR**

REF.	DN	Φd	L	P/kg
5501	50	50	180	1.3
5502	63	63	180	2.2
5503	75	75	200	2.6
5504	90	90	240	3.8
5505	110	110	270	4.8
5505-A	125	125	290	8.7
5506	160	160	300	10.2
5507	200	200	310	14.2
5507-A	225	225	320	19.0
5508	250	250	330	19.0
5508-A	280	280	360	22.5
5509	315	315	420	34.3
5510	400	400	460	42.0



**SERIES-5300
REDUCING BUSHING**

REF.	DN	L	A	P/kg
5301	63/50	80	120	1.3
5302	75/50	100	140	2.7
5302-A	75/63	100	140	1.9
5303	90/63	105	155	3.5
5303-A	90/75	110	155	2.8
5304	110/63	120	165	6.7
5304-A	110/75	120	165	6.2
5304-B	110/90	120	170	5.0
5305	160/90	130	190	17.6
5305-A	160/110	135	190	13.0
5306	200/110	150	220	29.0
5306-A	200/160	150	220	18.5
5307	250/160	175	240	44.0
5307-A	250/200	175	240	31.0



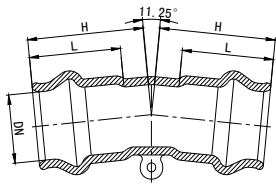
SERIES-5050

DOUBLE SOCKET TEE WITH FLANGE BRANCH

mm

REF.	SIZE	DN	Φd	A	H	P/kg
5051	50/40	40	50	240	90	4.6
5052-A	63/40	40	63	250	140	4.7
5052-B	63/50	50	63	250	140	5.6
5052-C	63/60	60	63	250	140	5.8
5052-D	63/65	65	63	250	140	6.5
5053	75/40	40	75	240	130	6.5
5053-A	75/50	50	75	250	140	6.4
5053-B	75/60	60	75	265	140	7.7
5053-C	75/65	65	75	265	140	7.6
5053-D	75/80	80	75	265	140	10.0
5054	90/40	40	90	265	135	7.6
5054-A	90/50	50	90	275	145	8.6
5054-B	90/60	60	90	290	155	9.4
5054-C	90/65	65	90	290	155	9.5
5054-D	90/80	80	90	305	160	11.0
5055	110/40	40	110	285	145	9.4
5055-A	110/50	50	110	295	145	9.9
5055-B	110/60	60	110	310	165	10.5
5055-C	110/65	65	110	310	165	10.7
5055-D	110/80	80	110	325	170	11.5
5055-E	110/100	100	110	345	170	13.0
5056	125/40	40	125	295	160	12.2
5056-A	125/50	50	125	330	160	13.0
5056-B	125/60	60	125	320	160	13.5
5056-C	125/80	80	125	335	170	14.4
5056-D	125/100	100	125	355	180	17.8
5056-E	125/125	125	125	380	180	19.3
5057	140/40	40	140	305	160	13.2
5057-A	140/50	50	140	320	160	13.5
5057-B	140/60	140	60	330	180	14.2
5057-C	140/65	140	65	335	200	14.3
5057-D	140/80	80	140	345	185	14.5
5057-E	140/100	100	140	365	195	14.7
5057-F	140/125	125	140	390	200	19.0
5058	160/40	40	160	325	170	17.1
5058-A	160/50	50	160	360	200	17.2
5058-B	160/60	60	160	350	190	17.4
5058-C	160/65	65	160	365	215	17.5
5058-D	160/80	80	160	365	200	17.8
5058-E	160/100	100	160	385	205	18.7
5058-F	160/125	125	160	410	210	19.0
5058-G	160/150	150	160	435	220	24.0
5059	180/60	60	180	410	210	17.3
5059-A	180/100	100	180	450	210	20.5
5059-B	180/150	150	180	500	220	26.0
5059-C	180/200	200	180	550	240	31.6
5060	200/40	40	200	380	195	20.8
5060-A	200/50	50	200	390	195	21.7
5060-B	200/60	60	200	405	215	22.0

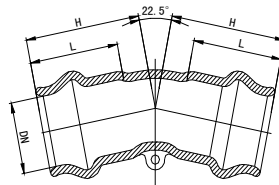
REF.	SIZE	DN	Φd	A	H	P/kg
5060-C	200/80	80	200	420	225	25.0
5060-D	200/100	100	200	440	230	27.0
5060-E	200/125	125	200	465	240	28.4
5060-F	200/150	150	200	490	245	34.0
5060-G	200/200	200	200	540	250	36.5
5061	225/60	60	225	425	215	24.6
5061-A	225/80	80	225	440	225	26.5
5061-B	225/100	100	225	460	230	27.8
5061-C	225/125	125	225	485	240	28.4
5061-D	225/150	150	225	510	245	35.0
5061-E	225/200	200	225	560	260	33.9
5062	250/60	60	250	460	250	33.1
5062-A	250/80	80	250	475	250	34.9
5062-B	250/100	100	250	495	255	38.0
5062-C	250/125	125	250	520	260	36.4
5062-D	250/150	150	250	545	265	46.0
5062-E	250/200	200	250	595	275	55.6
5062-F	250/250	250	250	645	285	57.4
5063	280/80	80	280	470	280	32.0
5063-A	280/100	100	280	490	290	36.5
5063-B	280/150	150	280	540	285	41.0
5063-C	280/200	200	280	590	290	48.0
5063-D	280/250	250	280	640	305	64.0
5064	315/80	80	315	525	295	59.5
5064-A	315/100	100	315	545	300	61.0
5064-B	315/150	150	315	595	310	64.0
5064-C	315/200	200	315	645	310	70.8
5064-D	315/250	250	315	695	310	73.0
5064-E	315/300	300	315	745	310	81.3
5065	355/80	80	355	550	305	51.2
5065-A	355/100	100	355	570	310	53.9
5065-B	355/150	150	355	620	330	61.6
5065-C	355/200	200	355	670	330	69.9
5065-D	355/250	250	355	720	330	79.2
5065-E	355/300	300	355	770	330	85.8
5065-F	355/350	300	355	820	350	95.7
5066	400/80	80	400	580	350	70.0
5066-A	400/100	100	400	580	350	73.0
5066-B	400/150	150	400	630	350	92.0
5066-C	400/200	200	400	680	350	95.0
5066-D	400/250	250	400	720	350	107.0
5066-E	400/300	300	400	780	350	122.0
5066-F	400/400	400	400	880	360	162.0
5067	450/80	80	450	560	340	64.4
5067-A	450/100	100	450	580	355	67.7
5067-B	450/150	150	450	630	360	77.0
5067-C	450/200	200	450	680	365	84.2
5067-D	450/400	400	450	880	395	126.5



SERIES-5200

DOUBLE SOCKET BENDS 11.25°

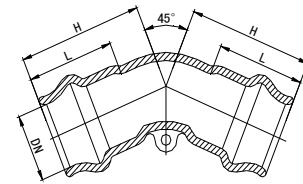
REF.	Φd	L	H	P/kg
5201	50	80	100	1.3
5202	63	90	110	2.2
5203	75	90	115	3
5204	90	100	125	4.2
5205	110	110	140	5.8
5206	125	115	145	5.9
5207	140	120	150	7.4
5208	160	130	160	12.5
5210	200	140	170	16.5
5211	225	150	190	16
5212	250	160	200	31
5213	280	170	220	29
5214	315	185	240	44.4
5015	355	205	259	47.5



SERIES-5225

DOUBLE SOCKET BENDS 22.5°

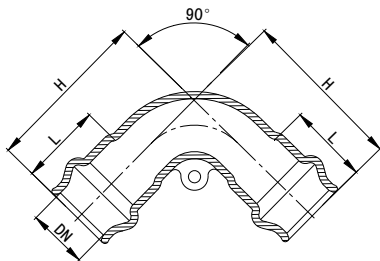
REF.	Φd	L	H	P/kg
5226	50	80	100	1.4
5227	63	90	110	2.6
5228	75	90	115	3.7
5229	90	100	125	4.25
5230	110	110	140	6.3
5231	125	115	145	6.5
5232	140	120	150	7.4
5233	160	130	165	12.5
5235	200	140	180	18.5
5236	225	150	195	16.7
5237	250	160	210	24
5238	280	170	245	36
5239	315	185	270	43
5240	355	205	319	48.5



SERIES-5250

DOUBLE SOCKET BENDS 45°

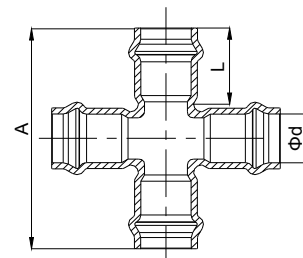
REF.	Φd	L	H	P/kg
5251	50	80	120	1.7
5252	63	90	130	2.6
5253	75	90	130	3.8
5254	90	100	150	5.8
5255	110	110	170	7.9
5256	125	115	180	8.9
5257	140	120	185	10
5258	160	130	200	15.5
5260	200	140	210	23
5261	225	150	230	30
5262	250	160	270	35
5263	280	170	300	44
5264	315	185	320	48
5265	355	205	376	46.5



SERIES 5175

DOUBLE SOCKET BENDS 90°

REF.	Φd	L	H	P/kg
5176	50	80	140	1.8
5177	63	90	155	3.3
5178	75	90	160	3.8
5179	90	100	175	5.3
5180	110	110	195	8
5185	125	115	225	10
5182	140	120	230	12
5183	160	130	260	17.5
5185	200	140	300	29
5186	225	150	310	34
5187	250	160	345	40
5188	280	170	375	48
5189	315	185	400	55

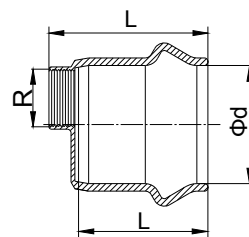
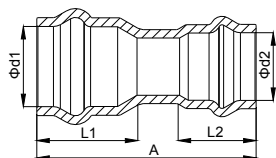


SERIES 5175

ALL SOCKET CROSSES mm

REF.	Φd	A	L	P/kg
5126	75	305	95	6.0
5127	90	340	100	8.5
5128	110	380	105	9.9
5129	160	450	135	23.3
5130	200	588	150	43.0
5131	250	624	170	46.3
5132	315	700	190	68.0





**SERIES 5325
SOCKET REDUCER**

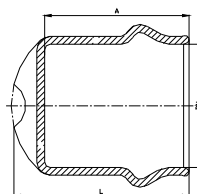
mm

REF.	SIZE	Φd1	Φd2	A	L1	L2	P/kg
5326	63/50	63	50	190	95	90	1.7
5327	75/63	75	63	200	100	95	3.2
5328	90/63	90	63	215	105	95	3.4
5328-A	90/75	90	75	215	105	100	4.0
5329	110/63	110	63	235	115	95	4.2
5329-A	110/75	110	75	235	115	100	4.5
5329-B	110/90	110	90	240	115	105	5.5
5330	125/63	125	63	280	125	95	3.8
5330-A	125/90	125	90	260	125	105	6.5
5330-B	125/110	125	110	265	125	115	7.0
5331	140/90	140	90	275	130	105	5.5
5331-A	140/110	140	110	270	130	115	7.3
5331-B	140/125	140	125	275	130	125	8.5
5332	160/63	160	63	285	145	95	8.5
5332-A	160/75	160	75	285	145	100	8.7
5332-B	160/90	160	90	285	145	105	8.9
5332-C	160/110	160	110	285	145	115	9.3
5332-D	160/125	160	125	285	145	125	9.5
5332-E	160/140	160	140	290	145	130	10.6
5333	200/90	200	90	310	155	105	10.4
5333-A	200/110	200	110	330	155	115	13.5
5333-B	200/140	200	140	330	155	130	14.0
5333-C	200/160	200	160	340	155	145	14.5
5334	225/90	225	90	340	155	105	14.8
5334-A	225/110	225	110	345	155	115	15.5
5334-B	225/140	225	140	325	155	130	16.0
5334-C	225/160	225	160	340	155	145	17.0
5334-D	225/200	225	200	350	155	155	17.2
5335	250/110	250	110	360	175	115	17.0
5335-A	250/140	250	140	360	170	135	14.0
5335-B	250/160	250	160	380	175	145	19.2
5335-C	250/200	250	200	380	175	155	20.0
5335-D	250/225	250	225	400	175	155	22.0
5336	280/160	280	160	400	185	145	24.0
5336-A	280/225	280	225	400	185	155	26.0
5336-B	280/250	280	250	420	185	175	27.7
5337	315/110	315	110	410	190	155	24.0
5337-A	315/160	315	160	420	190	155	29.0
5337-B	315/200	315	200	430	190	155	27.5
5337-C	315/225	315	225	400	190	155	30.5
5337-D	315/250	315	250	435	190	175	30.0
5338	355/250	355	250	430	205	175	33.0
5338-A	355/315	355	315	450	205	190	33.2
5339	400/250	400	250	480	230	175	40.3
5339-A	400/315	400	315	480	230	190	42.5
5339-B	400/355	400	355	500	230	205	46.0

**SERIES 5350
CAPS THREADED BRANCH**

mm

REF.	Φd	R	A	L	P/kg
5351	50	1"	110	90	1.1
5352	63	1"	115	95	1.5
5353	75	1"	125	100	2.0
5354	90	1"	130	105	2.7
5355	110	2"	140	115	3.5
5356	125	2"	165	125	4.2
5357	140	2"	160	130	5.0
5358	160	2"	175	145	6.0
5359	180	2"	190	155	7.5
5360	200	2"	190	155	9.0
5361	225	2"	190	155	11.0
5362	250	2"	205	175	14.4
5363	280	2"	225	185	17.6
5364	315	2"	225	190	20.7

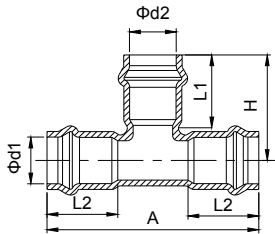


SERIES 5375

CAPS

mm

REF.	Φd	A	L	P/kg
5376	50	80	100	0.7
5377	63	90	110	1.3
5378	75	90	115	1.7
5379	90	100	125	2.2
5380	110	110	135	3.1
5381	125	115	145	4.5
5382	140	120	150	4.9
5383	160	130	160	6.5
5385	200	140	175	9.2
5386	225	150	185	12
5387	250	160	195	15.6
5388	280	170	205	22
5389	315	185	220	24.7



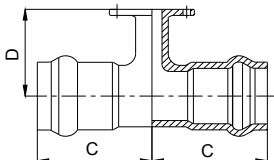
SERIES 5075

ALL SOCKET TEE

mm

REF.	SIZE	Φd1	Φd2	A	H	L1	L2	P/kg
5076	50/50	50	50	220	110	95	95	2.2
5077	63/50	63	50	245	125	95	90	3.8
5077-A	63/63	63	63	250	120	95	95	3.8
5078	75/50	75	50	250	130	95	95	4.2
5078-A	75/63	75	63	250	135	95	95	4.5
5078-B	75/75	75	75	265	135	95	95	5.2
5079	90/63	90	63	275	140	105	95	5.9
5079-A	90/75	90	75	290	140	105	100	6.5
5079-B	90/90	90	90	305	150	105	105	7.7
5080	110/63	110	63	295	150	115	95	7.6
5080-A	110/75	110	75	310	150	115	100	8.3
5080-B	110/90	110	90	325	160	115	105	8.8
5080-C	110/110	110	110	345	170	115	115	10.0
5081	125/63	125	63	305	160	125	95	7.7
5081-A	125/75	125	75	320	160	125	100	10.1
5081-B	125/90	125	90	335	170	125	105	8.8
5081-C	125/110	125	110	355	180	125	115	9.1
5081-D	125/125	125	125	380	185	125	125	12.1
5082	140/63	140	63	315	165	130	95	10.0
5082-A	140/75	140	75	330	165	130	100	10.4
5082-B	140/90	140	90	345	175	130	105	11.0
5082-C	140/110	140	110	365	185	130	115	10.8
5082-D	140/125	140	125	370	205	130	125	12.7
5082-E	140/140	140	140	390	195	130	130	13.3
5083	160/63	160	63	335	175	145	95	14.0
5083-A	160/75	160	75	350	175	145	100	11.2
5083-B	160/90	160	90	365	185	145	105	15.6
5083-C	160/110	160	110	385	195	145	115	16.3
5083-D	160/125	160	125	385	200	145	125	13.8
5083-E	160/140	160	140	410	205	145	130	15.0
5083-F	160/160	160	160	435	215	145	145	21.0
5084	200/75	200	75	390	210	155	100	16.2
5084-A	200/90	200	90	420	205	155	105	18.5
5084-B	200/110	200	110	440	215	155	115	21.0
5084-C	200/125	200	125	440	220	155	125	18.6
5084-D	200/140	200	140	465	225	155	130	26.5
5084-E	200/160	200	160	490	235	155	145	30.0
5084-F	200/180	200	180	510	260	155	155	31.0

REF.	SIZE	Φd1	Φd2	A	H	L1	L2	P/kg
5084-G	200/200	200	200	520	245	155	155	33.0
5085	225/75	225	75	400	205	155	100	27.5
5085-A	225/90	225	90	440	220	155	105	28.0
5085-B	225/110	225	110	460	230	155	115	29.0
5085-C	225/140	225	140	455	240	155	130	30.0
5085-D	225/160	225	160	510	250	155	145	32.0
5085-E	225/180	225	180	490	275	155	155	34.0
5085-F	225/200	225	200	520	270	175	155	35.0
5085-G	225/225	225	225	560	270	175	155	37.5
5086	250/90	250	90	475	230	175	105	28.6
5086-A	250/110	250	110	495	240	175	115	26.5
5086-B	250/140	250	140	510	260	175	130	36.2
5086-C	250/160	250	160	545	260	175	145	36.5
5086-D	250/200	250	200	570	270	175	155	38.5
5086-E	250/250	250	250	620	290	175	175	43.0
5087	280/90	280	90	495	245	185	105	36.0
5087-A	280/110	280	110	515	255	185	115	38.0
5087-B	280/160	280	160	565	275	185	145	44.0
5087-C	280/225	280	225	620	300	185	155	50.0
5087-D	280/250	280	250	665	315	185	185	55.0
5087-E	280/280	280	280	665	315	185	185	58.0
5088	315/90	315	90	480	265	190	105	32.6
5088-A	315/110	315	110	545	275	190	115	37.3
5088-B	315/140	315	140	540	290	190	130	42.5
5088-C	315/160	315	160	595	295	190	145	52.0
5088-D	315/200	315	200	620	305	190	155	59.0
5088-E	315/225	315	225	610	345	190	175	61.0
5088-F	315/250	315	250	670	325	190	175	63.0
5088-G	315/280	315	280	665	355	190	185	64.2
5088-H	315/315	315	315	745	350	190	190	74.0
5089	355/110	355	110	570	290	205	115	49.3
5089-A	355/160	355	160	600	315	205	145	53.9
5089-B	355/200	355	200	630	340	205	155	58.9
5089-C	355/315	355	315	740	385	205	190	70.1
5089-D	355/355	355	355	780	390	205	205	75.1
5090	400/200	400	200	680	370	230	155	71.0
5090-A	400/315	400	315	790	410	230	190	83.6
5090-B	400/400	400	400	880	440	230	230	95.7



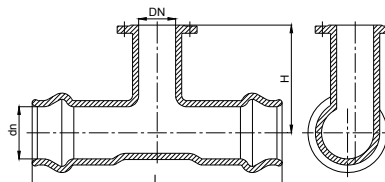
SERIES 5600

HYDRANT TEES

mm

REF.	DN	C	D	P/kg
5601	75/80	132.5	140	7.4
5602	90/80	152.5	160	8.7
5603	110/80	162.5	170	10.3
5607	125/80	167.5	170	14.4
5604	160/80	182.5	200	15.5
5605	200/80	210	225	21.2
5606	250/80	237.5	250	32.7
5608	315/80	262.5	295	44.0

FLANGE BRANCH 80 mm



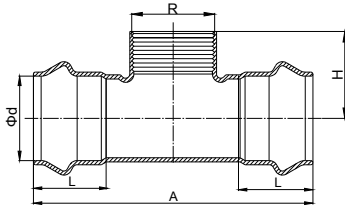
SERIES 5650

SCOUR TEES

mm

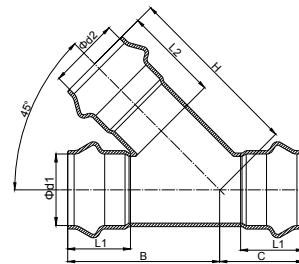
REF.	SIZE	DN	dn	L	H	P/kg
5651	110/100	100	110	345	170	13.0
5652	160/100	100	160	385	205	18.8
5653	200/100	100	200	440	230	29.0
5654	250/100	100	250	495	255	32.0
5655	315/100	100	315	545	300	50.0

FLANGE BRANCH 100 mm



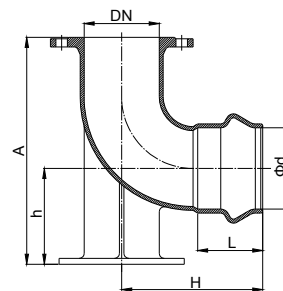
**SERIES 5100
DOUBLE SOCKET COLLAR
THREAD BRANCH** mm

REF.	Φd	R	A	L	H	P/kg
5101	50	1"	220	90	60	2.4
5102	63	1"	230	95	60	3.2
5102-A	63	1-1/4"	240	95	60	3.4
5102-B	63	1-1/2"	245	95	60	3.5
5102-C	63	2"	255	95	60	3.7
5103	75	1"	246	100	64	4.0
5103-A	75	1-1/4"	256	100	64	4.2
5103-B	75	1-1/2"	260	100	64	4.3
5103-C	75	2"	275	100	64	4.5
5104	90	1-1/4"	250	105	80	4.7
5104-A	90	1-1/2"	260	105	80	4.9
5104-B	90	1"	265	105	80	5.0
5104-C	90	2"	275	105	80	5.2
5104-D	90	3"	305	105	95	6.2
5105	110	1-1/4"	270	115	90	6.0
5105-A	110	1-1/2"	280	115	90	6.2
5105-B	110	1"	285	115	90	6.4
5105-C	110	2"	295	115	90	6.5
5105-D	110	3"	325	115	120	8.0
5105-E	110	4"	355	115	115	9.3
5106	125	1-1/4"	310	125	95	7.7
5106-A	125	1-1/2"	310	125	95	7.8
5106-B	125	1"	320	125	95	8.0
5106-C	125	2"	330	130	100	8.2
5107	140	1"	290	130	105	8.1
5107-A	140	1-1/4"	300	130	105	8.3
5107-B	140	1-1/2"	305	130	105	8.5
5107-C	140	2"	315	130	105	9.0
5108	160	1"	320	145	115	10.0
5108-A	160	1-1/4"	330	145	115	10.3
5108-B	160	1-1/2"	335	145	115	10.6
5108-C	160	2"	345	145	115	11.0
5108-D	160	3"	375	145	115	11.8
5109	180	1"	370	155	135	13.0
5109-A	180	2"	390	155	130	13.5
5110	200	1"	360	155	130	15.5
5110-A	200	2"	380	155	135	16.5
5111	225	1"	350	155	150	17.0
5111-A	225	1-1/4"	360	155	150	17.6
5111-B	225	1-1/2"	365	155	150	18.2
5111-C	225	2"	375	155	150	18.5
5112	250	1"	390	175	160	24.0
5112-A	250	2"	415	175	165	25.5
5113	280	2"	460	185	175	30.8
5114	315	2"	450	190	195	34.5
5115	400	1"	500	230	240	48.0
5115-A	400	2"	530	230	250	50.6



**SERIES 5150
ALL SOCKET TEE 45°** mm

REF.	SIZE	Φd1	Φd2	B	C	H	L1	L2	P/kg
5150	63/63	63	63	220	125	225	95	95	7.0
5151	90/90	90	90	235	140	235	105	105	8.0
5152	110/90	110	90	250	140	250	115	105	10.0
5152-A	110/110	110	110	270	155	270	115	115	11.5
5153	140/90	140	90	285	145	265	130	105	13.0
5153-A	140/110	140	110	300	160	280	130	115	14.5
5153-B	140/140	140	140	315	180	315	130	130	16.7
5154	160/90	160	90	305	145	280	145	105	15.5
5154-A	160/110	160	110	320	155	295	145	115	17.0
5154-B	160/140	160	140	355	175	330	145	130	19.0
5154-C	160/160	160	160	345	190	345	145	145	21.0
5155	225/90	225	90	365	145	325	155	105	25.3
5155-A	225/110	225	110	380	160	335	155	115	27.0
5155-B	225/140	160	140	400	180	375	155	130	30.0
5155-C	225/160	255	160	415	190	290	155	145	32.5
5155-D	225/225	225	225	450	230	450	155	155	38.5
5156	280/110	280	110	440	170	375	185	115	41.8
5156-A	280/160	280	160	470	200	430	185	145	49.0
5156-B	280/225	280	225	315	240	490	185	155	57.2
5156-C	280/280	280	280	550	275	550	185	185	66.1
5157	315/90	315	90	430	205	385	190	105	50.6
5157-A	315/110	315	110	460	205	410	190	115	53.9
5157-B	315/160	315	160	510	205	480	190	145	58.3



**SERIES 5275
FLANGE SOCKET 90° DUCKFOOT BEND** mm

REF.	DN1	Φd	A	L	H	h	P/kg
5276	80	90	275	100	202	110	14.5
5277	80	110	300	110	237	120	15.0
5278	100	110	300	115	250	120	17.5
5279	80	160	300	145	280	120	18.0
5280	150	140	380	120	272	160	28.0